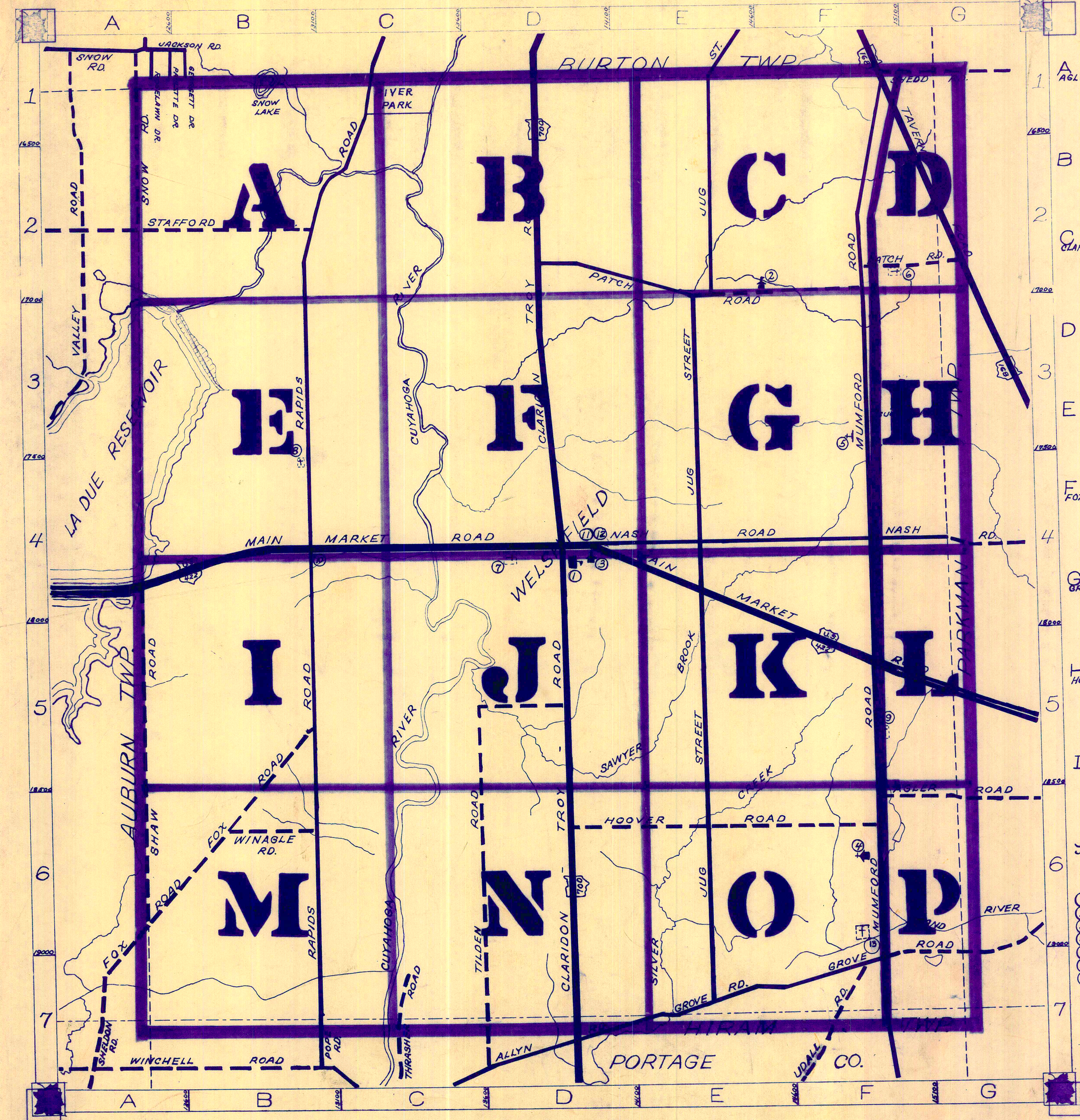


ROAD INDEX



1	A	AGLER RD. F6-G6	J cont.	S cont.
			K	
2	B	CLARIDON TROY RD. DI-D7	L	T TAVERN RD. F1-G3 THRASHER RD. C7 TILDEN RD. D6-D7
				M MAIN MARKET RD. A4-B5 MUMFORD RD. F1-F7
3	D		U	UDALL RD. F7
	E		N	NASH RD. D4-G4 V
4	F	FOX RD. A7-B5	O	W WINAGLE RD. B6
			P	PATCH RD. D2-B2 X
5	G	GROVE RD. E7-G6	Q	Y
			H	HOOVER RD. D6-F6
6	I	JUG ST. E1-E7	R	RAPIDS RD. C1-B7 Z
			S	SHAW RD. A4-A6 SHEDD RD. F1-G1 SNOW RD. A1-A2 STAFFORD RD. A2-B2

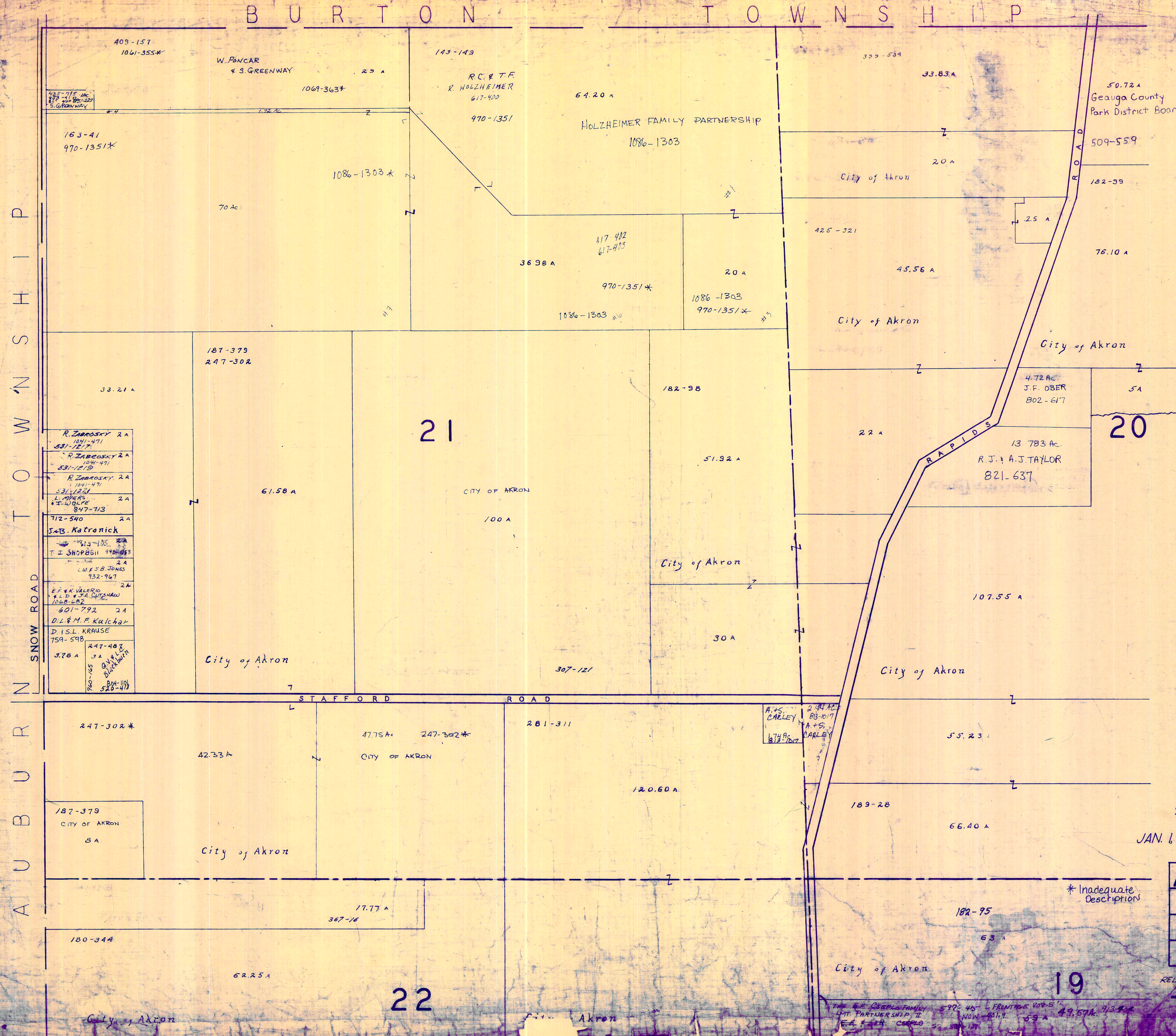
- ① TROY ELEMENTARY SCHOOL
- ⑧ PATCH CEMETERY
- ② AMISH SCHOOL
- ⑨ MUMFORD CEMETERY
- ③ TROY CONGREGATIONAL CH.
- ⑩ POPE HOME
- ④ TROY BAPTIST CHURCH
- ⑪ TROY COMMUNITY HOUSE
- ⑤ SHRINE OF OUR LADY OF MARIAPOCH
- ⑫ TROY VOL. FIRE DEPT.
- ⑥ BURROUGHS CEMETERY
- ⑬ GROVE CEMETERY
- ⑦ TROY CEMETERY

TROY TOWNSHIP

SCALE: 1"=2000'
 ROBERT L. PHILLIPS
 GEALUGA COUNTY ENGINEER

--- UNPAVED ROADS
 ——— PAVED ROADS
 - - - - - TOWNSHIP LINE
 - - - - - COUNTY LINE

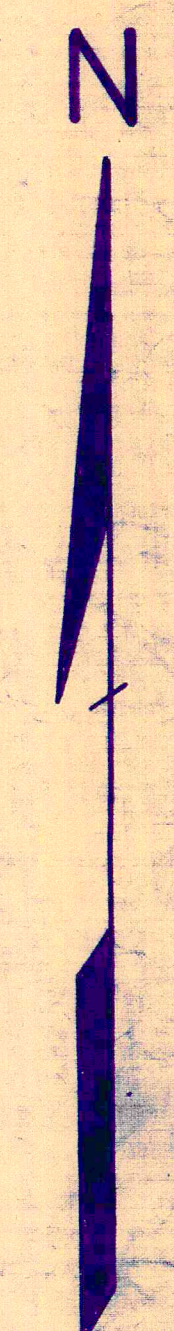
BURTON TOWNSHIP



TOWNSHIP

TOWNSHIP

TOWNSHIP



SCALE 1" = 300'

JAN. 6, 1997

A	B	C	D
E	F	G	H
I	J	K	L
M	N	O	P

RELATIVE REPRESENTATION

T ROY TWP

21

20

22

19

405-157
1061-355*

W. PINCAR
& S. GREENWAY

143-143

R.C. & T.F.
R. HOLZHEIMER
617-400

64.20 A

HOLZHEIMER FAMILY PARTNERSHIP
1086-1303

33.83 A

50.72 A
Geauga County
Park District Board

163-41
970-1351*

1086-1303*

70 Ac

970-1351

36.98 A

417-402
617-403

20 A

970-1351*

1086-1303
970-1351*

425-321

2.5 A

76.10 A

City of Akron

45.56 A

City of Akron

187-379
247-302

33.21 A

182-98

4.72 Ac
J.F. OBER
802-617

5 A

- R. Zabrosky 2 A
1041-471
531-1217
- R. Zabrosky 2 A
1041-471
531-1217
- R. Zabrosky 2 A
1041-471
531-1217
- L. WOLFE 2 A
847-713
- J.B. Katronick
- T.Z. SHOPSHIRE 2 A
940-053
- L.W. JONES 2 A
932-947
- E.F. & K. VALERIO 2 A
L.D. & J.A. SUTSHAU
1068-682
- D.L. & M.F. KULCHAR 2 A
601-792
- D. I.S.L. KRAUSE 2 A
759-598
- 247-402
3 A
247-402
3 A
247-402
3 A

61.58 A

CITY OF AKRON

100 A

51.92 A

City of Akron

22 A

13.783 Ac.
R.J. & A.J. TAYLOR
821-637

107.55 A

City of Akron

30 A

307-121

7

STAFFORD ROAD

247-302*

42.33 A

47.75 A
247-302*

CITY OF AKRON

281-311

120.60 A

A.V.S. CARLEY
2.44 AC
88-1017
A+S
819-1607

55.23 A

187-379
CITY OF AKRON
3 A

City of Akron

189-28

66.40 A

17.77 A
367-16

* Inadequate
Description

182-95

63 A

City of Akron

180-344

62.25 A

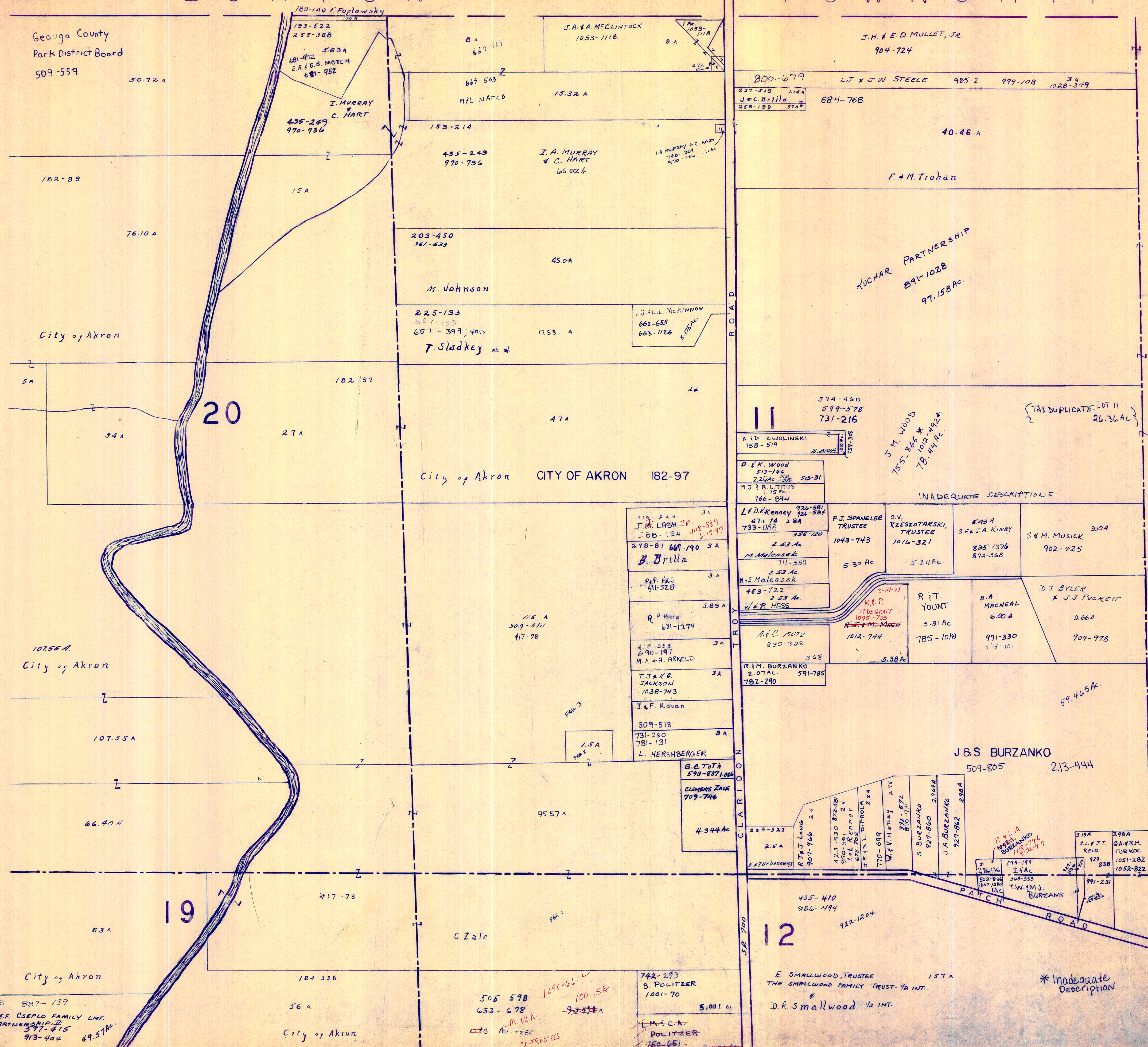
City of Akron

City of Akron

THE R.E. CSEPLO FAMILY
LMT. PARTNERSHIP, II
E.A. & E.H. CSEPLO

BURTON

TOWNSHIP



Geauga County
Park District Board
509-559

182-99

76.10 A

City of Akron

5A

20

34 A

27 A

182-97

City of Akron

CITY OF AKRON

182-97

107.55 A

City of Akron

107.55 A

66.40 A

19

63 A

City of Akron

184-338

56 A

City of Akron

SS 887-139
THE E.F. CSEKLO FAMILY LMT.
PARTNERSHIP II
377-415
913-404 49.57 AC

505 598 1090-661
653-678 100.15 AC
L.M. & C.A. POLITZER
CO-TRUSTEES

742-293
B. POLITZER
1001-70
5,001 AC
L.M. & C.A. POLITZER
750-651

12

E. SMALLWOOD, TRUSTEE
THE SMALLWOOD FAMILY TRUST - 1/2 INT.
D.R. Smallwood - 1/2 INT.

* Inadequate Description



SCALE 1"=300'

JANUARY 1, 1997
RELATIVE REPRESENTATION

A	B	C	D
E	F	G	H
I	J	K	L
M	N	O	P

TROY TWP

BURTON TOWNSHIP



SCALE 1" = 300'

JAN. 1, 1997

A	B	C	D
E	F	G	H
I	J	K	L
M	N	O	P

TROY TWP
RELATIVE REPRESENTATION
* Inadequate Description

136-476
599-578
731-216
TAX DUPLICATE
52 AC IN
LOT 10

78.440 Ac.
J.M. WOOD
755-866 *
INADEQUATE DESCRIPTIONS
1012-492*

SEC 10

SEC 11

SEC 9

SEC 2

THE E.F. CSEPELO FAMILY
LMT. PARTNERSHIP II
550-325

884-139
913-404 49.57Ac.
182-102
192-108
100 A

56 A

184-338

City of Akron

182-101

100 A

126 A

SEC. 19

City of Akron

City of Akron

170-392

126

City of Akron

184-339

Ac. 0.4

City of Akron

City of Akron

1039'

RIVER

728-881

143-711

50 A

City of Akron

SEC. 18

The City of Akron
810-1246
810-1265

26 Ac.

1502x27'

731-880
2.00 Ac.
W. REESE
888-243 587'

SHANDOR GARDENS, INC.
942-398
942-401
942-404

12.57 A.

93-998 A
L.M. & C.A.
POLITZER
653-678
CO-TRUSTEES
1090-661 ✓
1-21-97

435-410
826-494

157

E. SMALLWOOD, TRUSTEE
THE SMALLWOOD FAMILY TRUST - 1/2 INT.
D.R. Smallwood - 1/2 INT

922-1204

186-17
1.5 A
City of Akron

8.50 A

20 A

SEC. 12

W. U. Reid

111-769
574-456

50 A

184-339

69.50 Ac

City of Akron

454-38
571-801
12 A
574-69
576-975

454-34
574-69
576-972
576-975
641-884
672-804

53 A

K. Russell } 694-642
D. K. O'Reilly } 761-454

694-642
K. Russell } TRUSTEES
D.K. O'Reilly } 661-562

5.0 Ac. 762-667
K. RUSSELL
D. O'REILLY

510-647

50 A

PA. & N.L. LEUTY

454-36
574-69
576-972
576-975
641-884
672-804

87.0 Ac.

parcel #3

25.90 Ac.

E.A. & M.J.
DETWILER
1070-271
3.00 Ac.

ENOS A. EMERY JR.
DETWILER

K. Russell } 694-642
D. K. O'Reilly }

FOXGEN
922-850

37.80 Ac.

City of AKRON
663-483

18.31 Ac.

SEC. 13

J.F. & T.A.
ZIEGLER
1011-632

F.T. Assoc.
843-842
13.76 Ac.

TROY HILL RANGE, LTD.
1068-52

35.54 Ac

732-38
887-519

10.38 A

218-594
887-517

R.F. HURD JR.
667-295

193-433

21.60 A

229-310
306-194
731-1162

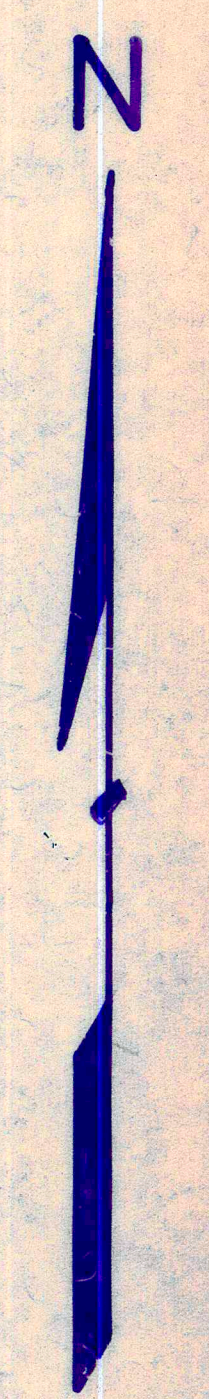
21.55 A

L. Hurd

T. Dizak

SEE DETAIL 16

See 16 Q



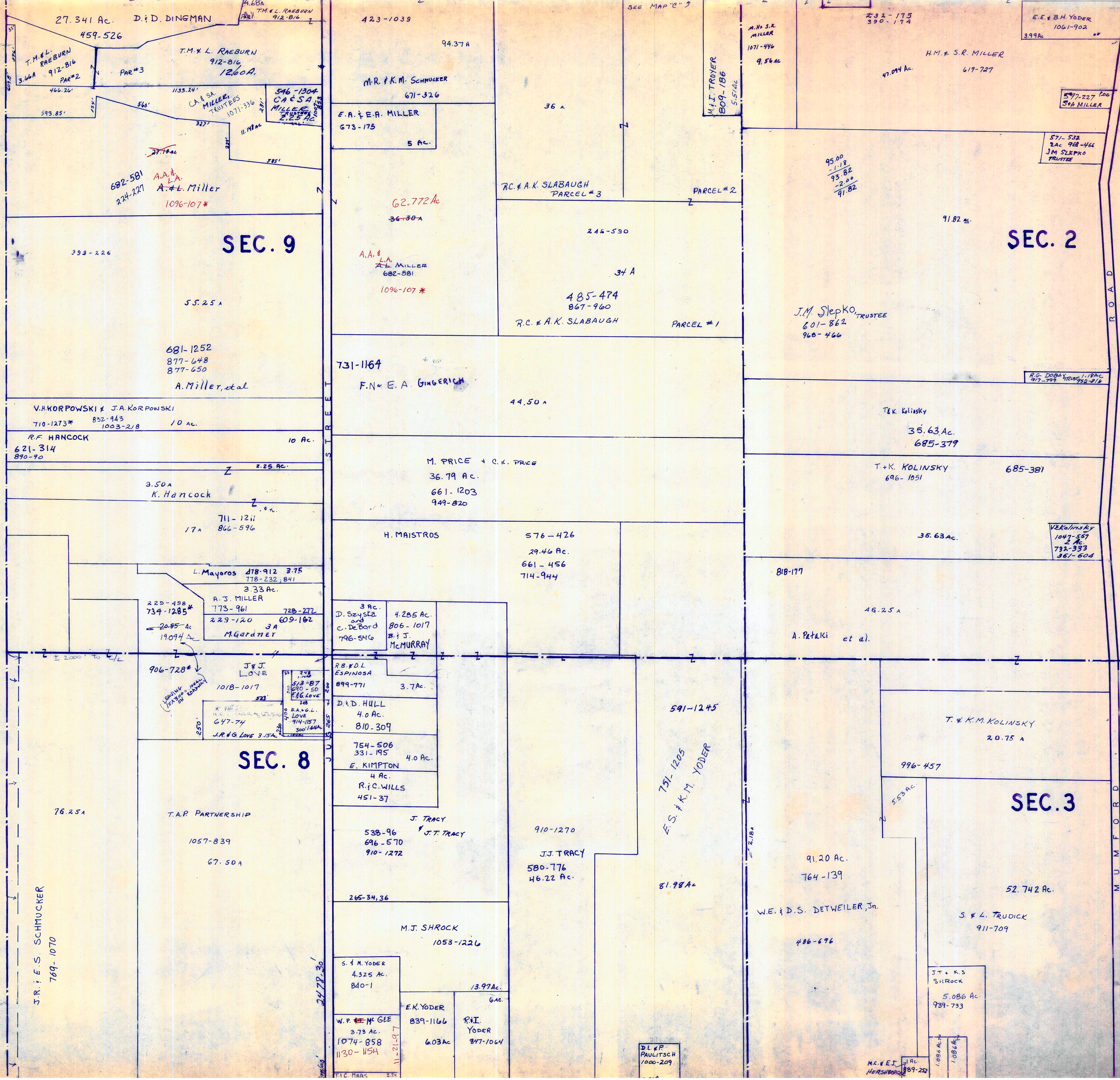
SCALE 1" = 300'

JAN 1, 1997

A	B	C	D
E	F	G	H
I	J	K	L
M	N	O	P

TROY TWP.

RELATIVE REPRESENTATION
* Inadequate description



SCALE 1"=300'

JAN. 1, 1997

A	B	C	D
E	F	G	H
I	J	K	L
M	N	O	P

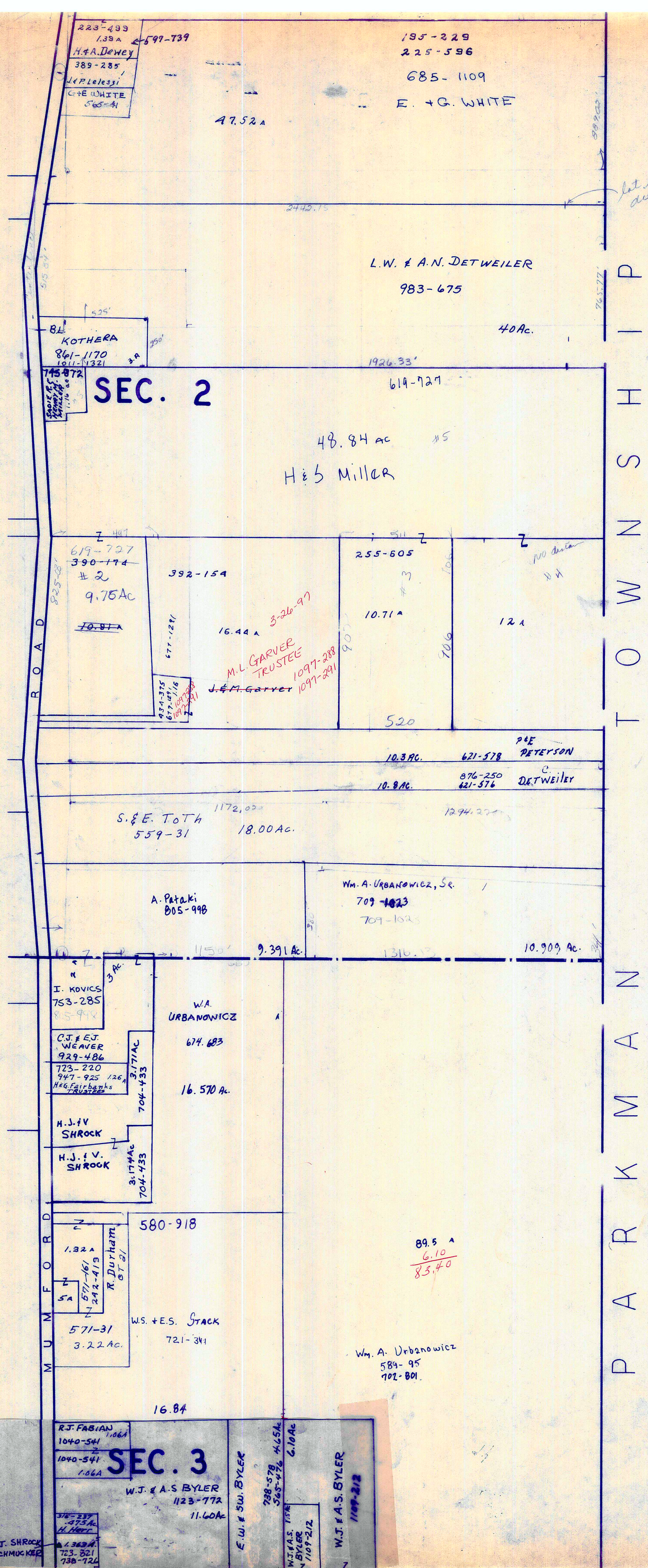
TROY TWP.

RELATIVE REPRESENTATION

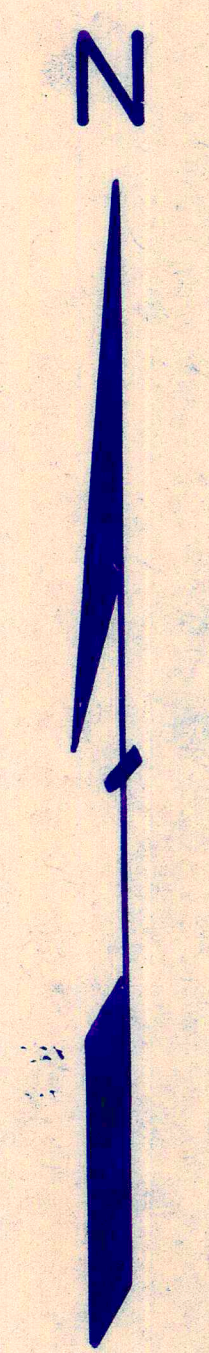
* Inadequate Description

J.R. & E.S. SCHMUCKER
769-1070

MUMFORD ROAD



P
A
R
K
M
A
N
T
O
W
N
S
H
I
P



SCALE 1"=300'

JAN. 1, 1997

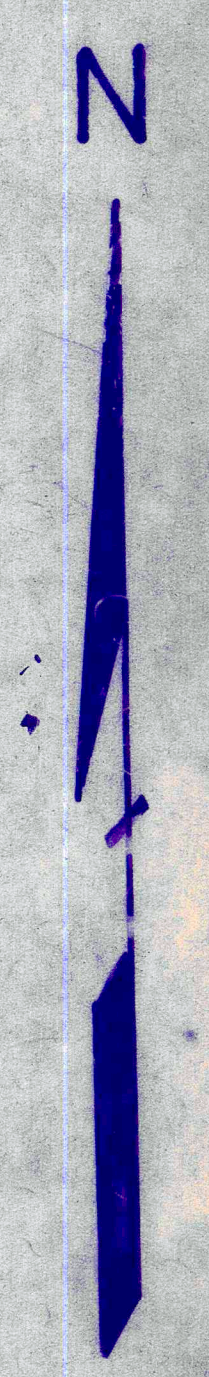
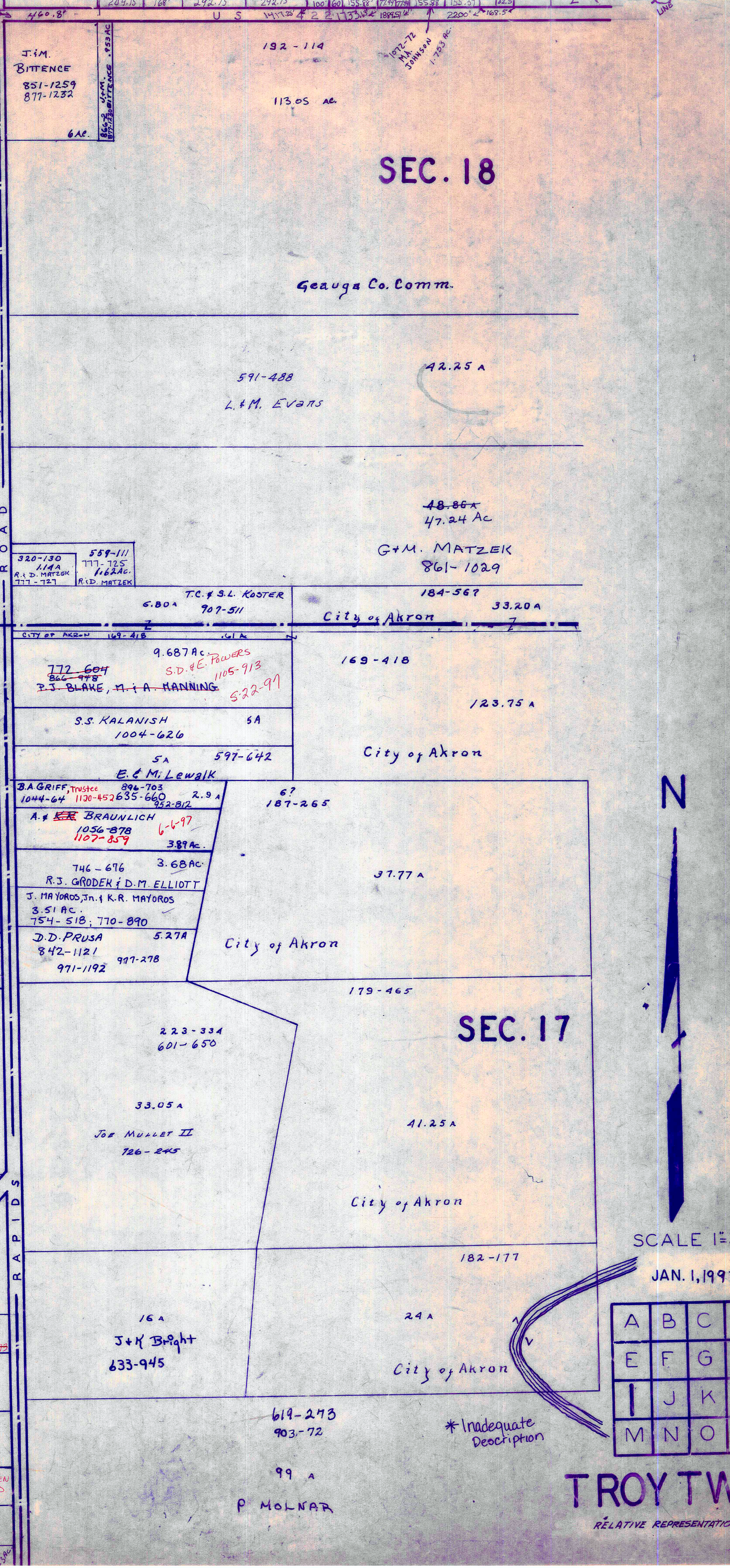
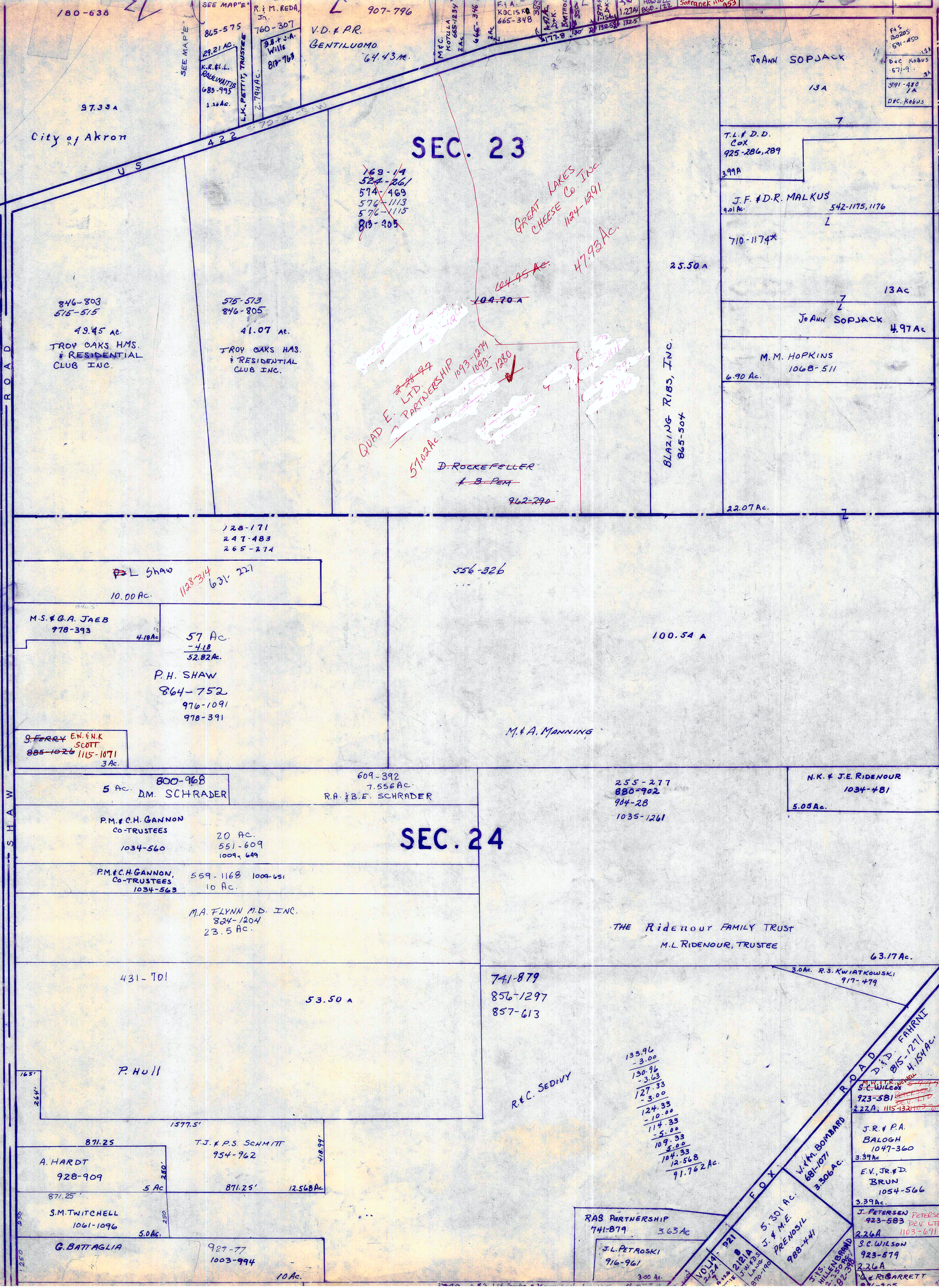
A	B	C	D
E	F	G	H
I	J	K	L
M	N	O	P

TROY TWP.

RELATIVE REPRESENTATION

*Inadequate Description

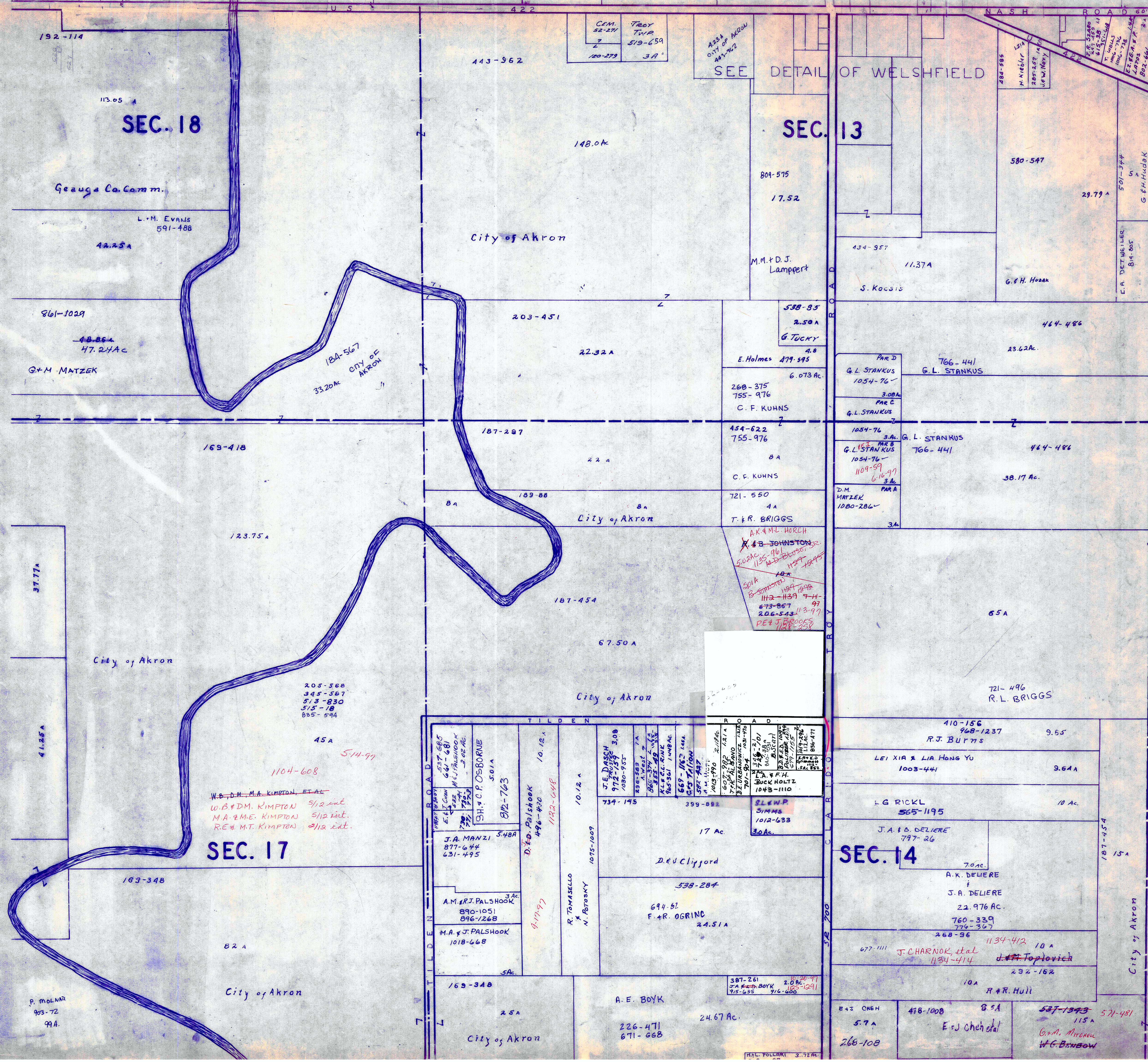
A U B U R N T O W N S H I P



SCALE 1"=300'
JAN. 1, 1997

A	B	C	D
E	F	G	H
I	J	K	L
M	N	O	P

TROY TWP
RELATIVE REPRESENTATION



SEC. 18

SEC. 13

SEC. 17

SEC. 14

City of Akron

Geauga Co. Comm.

L.M. EVANS
591-488

G.M. MATZEK

City of Akron

City of Akron

City of Akron

W.B. & D.M. KIMPTON, ET AL
M.A. & M.E. KIMPTON
R.C. & M.T. KIMPTON

SEE DETAIL OF WELSHFIELD

M.M. & D.J. Lampert

G. TOCKY

E. Holmes 479-595

C. F. KUHN

C. F. KUHN

T. & R. BRIGGS

T. & R. BRIGGS

AK 4 M.L. HORCH

AK 4 B. JOHNSTON

AK 4 R.L. BRIGGS

AK 4 R.J. BURNS

AK 4 L.G. RICKL

AK 4 J.A. & B. DELIERE

AK 4 J.A. & B. DELIERE

AK 4 J.A. & B. DELIERE

AK 4 J.A. & B. DELIERE

AK 4 J.A. & B. DELIERE

AK 4 J.A. & B. DELIERE

AK 4 J.A. & B. DELIERE

AK 4 J.A. & B. DELIERE

AK 4 J.A. & B. DELIERE

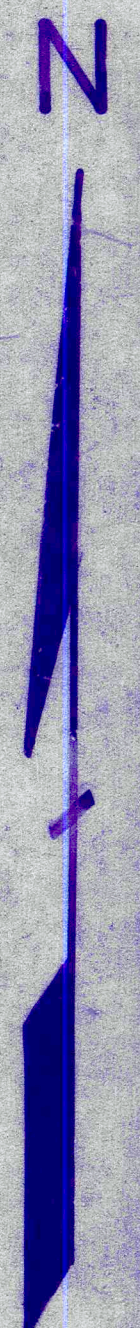
SCALE 1:300
JAN. 1, 1997

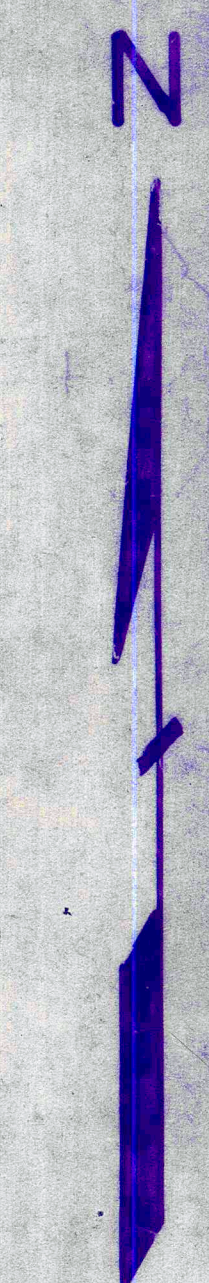
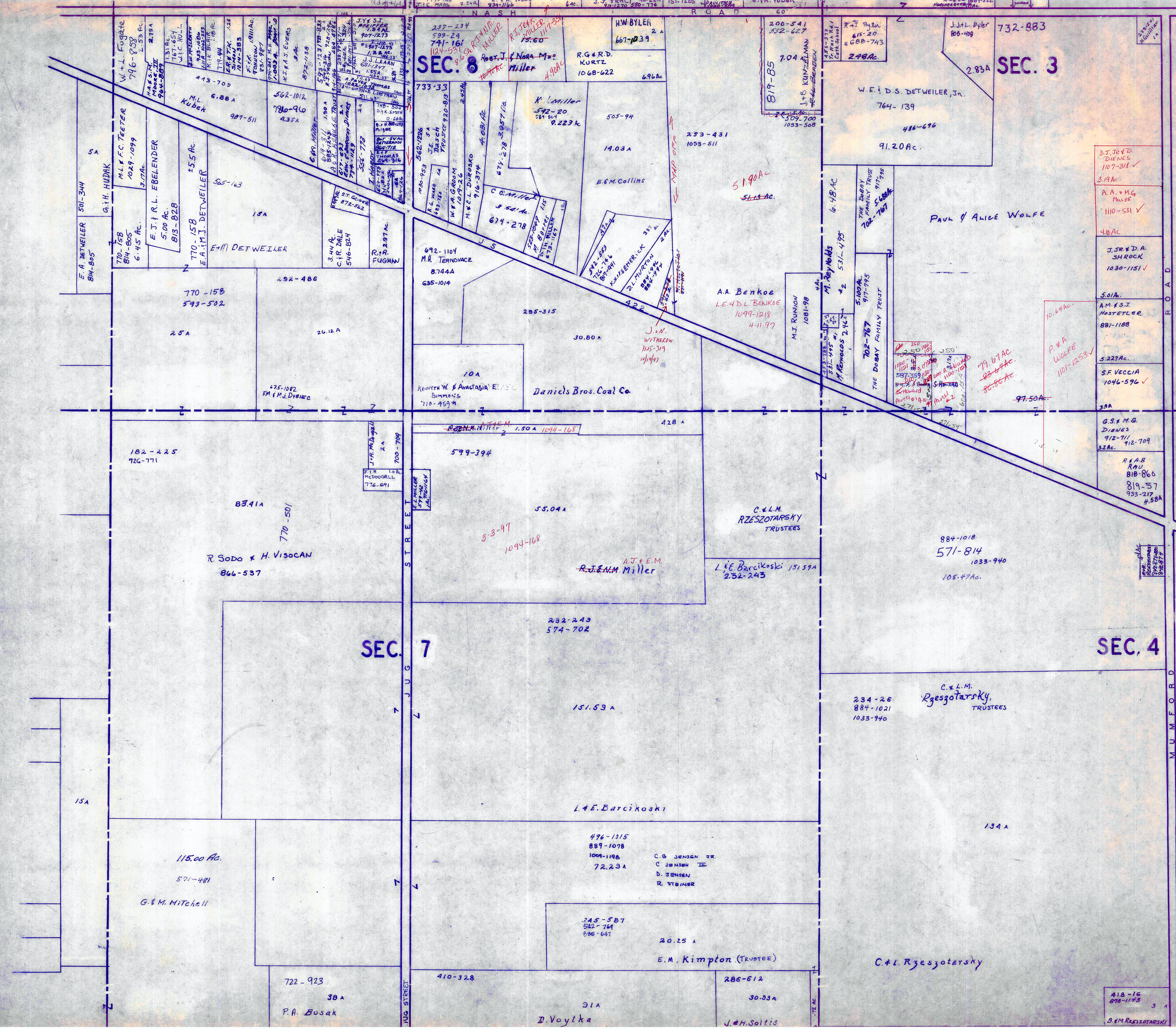
A	B	C	D
E	F	G	H
I	J	K	L
M	N	O	P

TROY TWP

RELATIVE REPRESENTATION

* Inadequate Description





SCALE 1"=300'

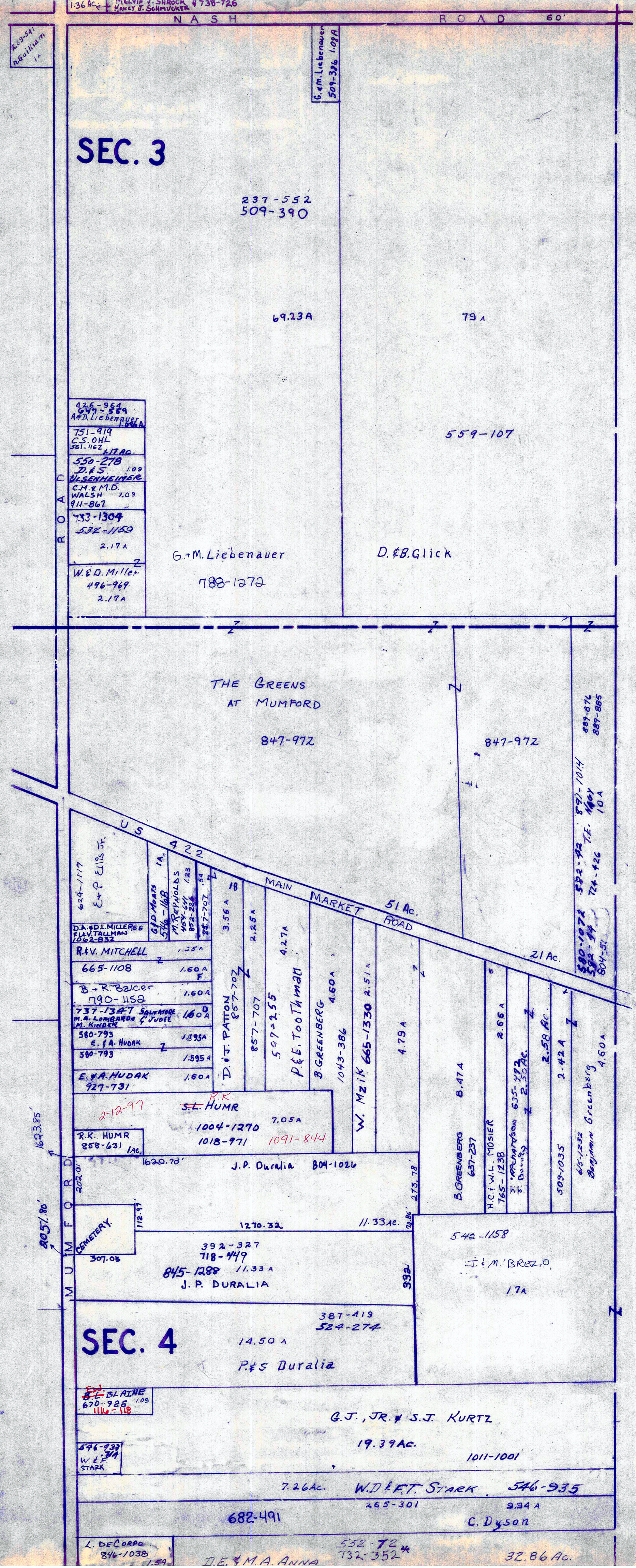
JAN. 1, 1997

A	B	C	D
E	F	G	H
I	J	K	L
M	N	O	P

RELATIVE REPRESENTATION
* INADEQUATE DESCRIPTION

TROY TWP

418-16
878-1173
3
B. & M. Rzeszotarsky



T O W N S H I P
P A R K M A N



SCALE 1"=300'

JAN. 1, 1997

RELATIVE REPRESENTATION

A	B	C	D
E	F	G	H
I	J	K	L
M	N	O	P

* Inadequate description

TROY TWP

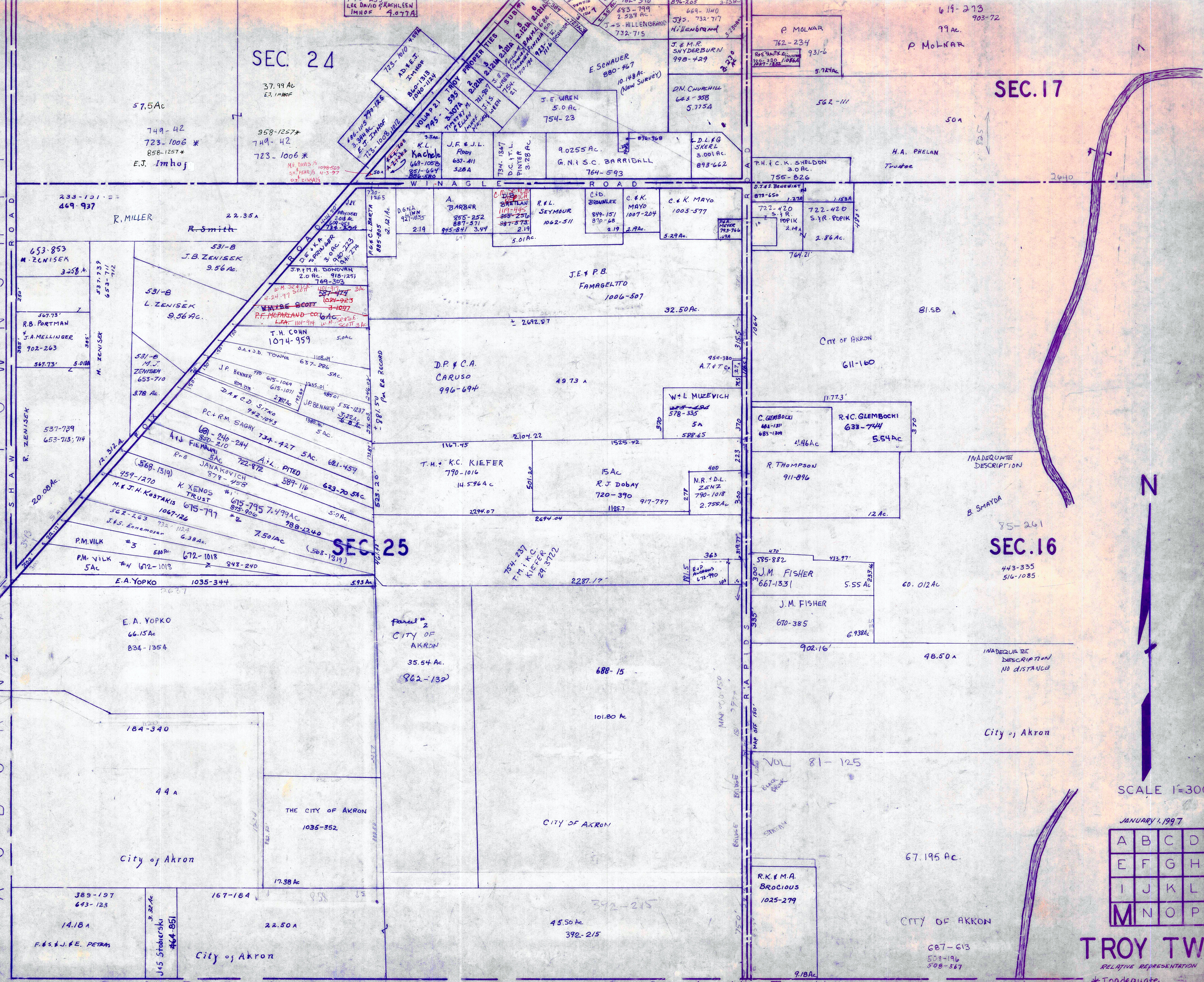
T O W N S H I P
S H A W N S H I P
A U B U R N

SEC. 24

SEC. 17

SEC. 25

SEC. 16



SCALE 1"=300'

JANUARY 1, 1997

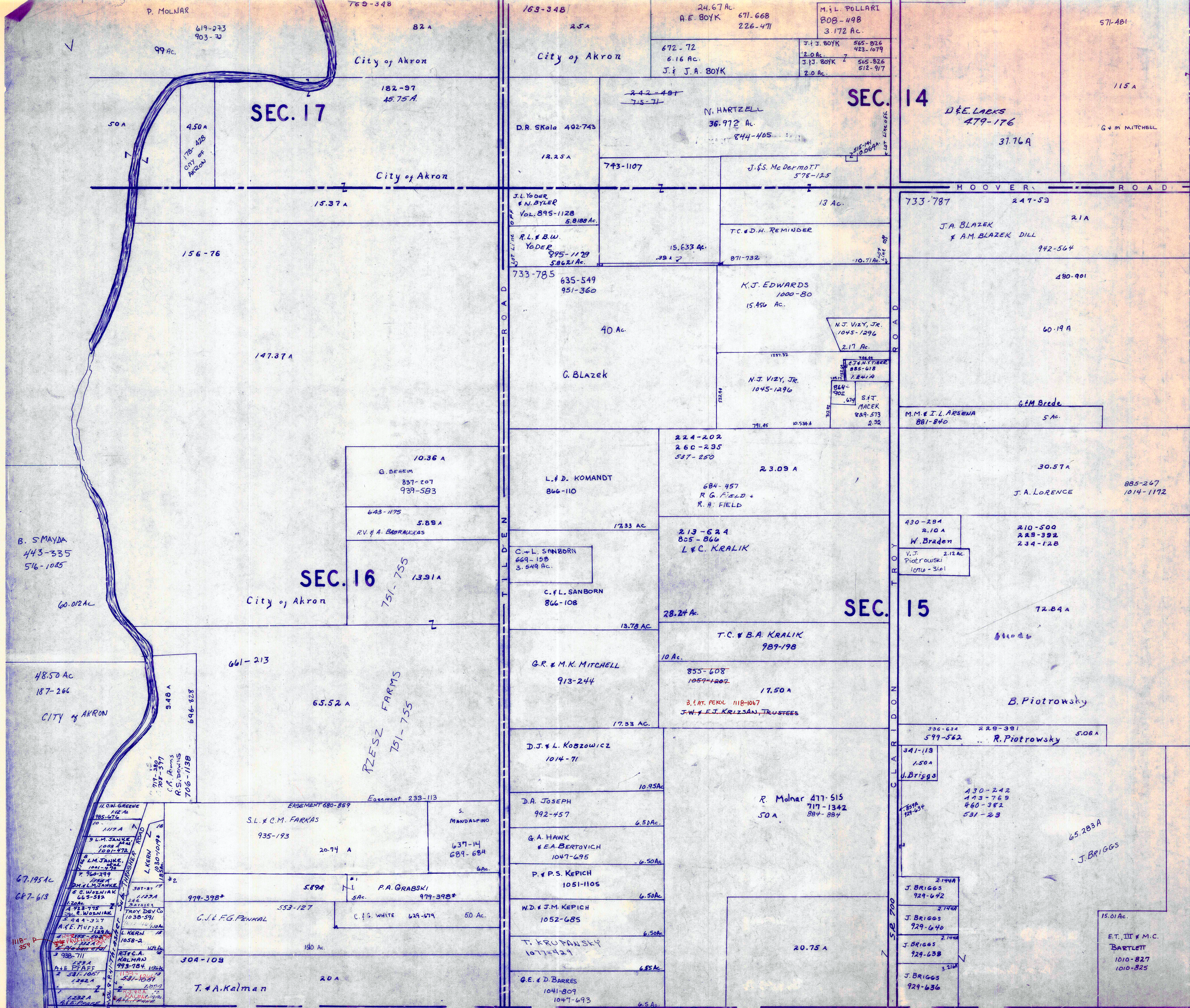
A	B	C	D
E	F	G	H
I	J	K	L
M	N	O	P

TROY TWP

RELATIVE REPRESENTATION

* Inadequate Description

P O R T A G E C O U N T Y



SCALE 1"=300'

JAN. 1, 1997
RELATIVE REPRESENTATION

A	B	C	D
E	F	G	H
I	J	K	L
M	N	O	P

TROY TWP.

* Inadequate Description

P. MOLNAR

SEC. 17

SEC. 16

SEC. 14

SEC. 15

B. S. MAYDA
443-335
516-1085

48.50 Ac
187-266
CITY of AKRON

67.195 Ac
687-613

11.011 GREENE
144 A
185-676

3 L.M. JANKE
1001-172

3 L.M. JANKE
1001-172

6 C. WOJENIAK
665-582

304-109

T. & A. Kalman

RZESZ FARMS
751-755

P.A. GRABSKI
979-398*

C.J. & F.G. FENKAL

20 A

163-348
25 A

City of Akron

D.R. Skala 492-743

J.L. Yoder & N. BYLER
Vol. 895-1128
5.8188 Ac.

R.L. & B.W. YODER
895-1129
5.8621 Ac.

733-785
635-549
951-360

40 Ac.

G. Blazek

10.36 A
G. BEHEM
837-207
939-583

643-1175
5.889 A
R.V. & A. BABRAKAS

C. & L. SANBORN
669-198
3.549 Ac.

C. & L. SANBORN
866-108

G.R. & M.K. MITCHELL
913-244

D.J. & L. KOBZOWICZ
1014-71

D.A. JOSEPH
992-457

G.A. HAWK & E.A. BERTOVICH
1047-695

P. & P.S. KEPICH
1051-1105

W.D. & J.M. KEPICH
1052-685

T. KRUPANSKY
1077-429

G.E. & D. BARRES
1041-809
1047-693

24.67 Ac.
A.E. BOYK 671-668
226-471

672-72
6.16 Ac.
J. & J.A. BOYK

2.42-4.81
7.5-7.1

N. HARTZELL
36.972 Ac.
844-405

743-1107

J. & S. Mc Dermott
578-125

J.L. Yoder & N. BYLER
Vol. 895-1128
5.8188 Ac.

R.L. & B.W. YODER
895-1129
5.8621 Ac.

15.633 Ac.

635-549
951-360

15.456 Ac.

K.J. EDWARDS
1000-80

N.J. VIZY, JR.
1045-1296
2.17 Ac.

224-202
260-295
537-250

2.309 A

684-457
R.G. FIELD &
R.A. FIELD

213-624
805-866
L & C. KRALIK

28.24 Ac.

T.C. & B.A. KRALIK
989-198

10 Ac.

855-608
1059-1207

17.50 A

B. AT. PEROL 118-1067
J.W. & E.T. KRIZZIAN, TRUSTEES

17.33 Ac.

D.J. & L. KOBZOWICZ
1014-71

10.95 Ac.

D.A. JOSEPH
992-457

G.A. HAWK & E.A. BERTOVICH
1047-695

P. & P.S. KEPICH
1051-1105

W.D. & J.M. KEPICH
1052-685

T. KRUPANSKY
1077-429

G.E. & D. BARRES
1041-809
1047-693

M. & L. POLLARI
808-498
3.172 Ac.

J. & J. BOYK
565-826
423-1079

J. & J. BOYK
565-826
512-917

2.0 Ac.

743-1107

J. & S. Mc Dermott
578-125

J.L. Yoder & N. BYLER
Vol. 895-1128
5.8188 Ac.

R.L. & B.W. YODER
895-1129
5.8621 Ac.

15.633 Ac.

635-549
951-360

15.456 Ac.

K.J. EDWARDS
1000-80

N.J. VIZY, JR.
1045-1296
2.17 Ac.

224-202
260-295
537-250

2.309 A

684-457
R.G. FIELD &
R.A. FIELD

213-624
805-866
L & C. KRALIK

28.24 Ac.

T.C. & B.A. KRALIK
989-198

10 Ac.

855-608
1059-1207

17.50 A

B. AT. PEROL 118-1067
J.W. & E.T. KRIZZIAN, TRUSTEES

17.33 Ac.

D.J. & L. KOBZOWICZ
1014-71

10.95 Ac.

D.A. JOSEPH
992-457

G.A. HAWK & E.A. BERTOVICH
1047-695

P. & P.S. KEPICH
1051-1105

W.D. & J.M. KEPICH
1052-685

T. KRUPANSKY
1077-429

G.E. & D. BARRES
1041-809
1047-693

571-481

115 A

D. & E. LAEKS
479-176

37.76 A

G. & M. MITCHELL

743-1107

J. & S. Mc Dermott
578-125

J.L. Yoder & N. BYLER
Vol. 895-1128
5.8188 Ac.

R.L. & B.W. YODER
895-1129
5.8621 Ac.

15.633 Ac.

635-549
951-360

15.456 Ac.

K.J. EDWARDS
1000-80

N.J. VIZY, JR.
1045-1296
2.17 Ac.

224-202
260-295
537-250

2.309 A

684-457
R.G. FIELD &
R.A. FIELD

213-624
805-866
L & C. KRALIK

28.24 Ac.

T.C. & B.A. KRALIK
989-198

10 Ac.

855-608
1059-1207

17.50 A

B. AT. PEROL 118-1067
J.W. & E.T. KRIZZIAN, TRUSTEES

17.33 Ac.

D.J. & L. KOBZOWICZ
1014-71

10.95 Ac.

D.A. JOSEPH
992-457

G.A. HAWK & E.A. BERTOVICH
1047-695

P. & P.S. KEPICH
1051-1105

W.D. & J.M. KEPICH
1052-685

T. KRUPANSKY
1077-429

571-481

115 A

D. & E. LAEKS
479-176

37.76 A

G. & M. MITCHELL

743-1107

J. & S. Mc Dermott
578-125

J.L. Yoder & N. BYLER
Vol. 895-1128
5.8188 Ac.

R.L. & B.W. YODER
895-1129
5.8621 Ac.

15.633 Ac.

635-549
951-360

15.456 Ac.

K.J. EDWARDS
1000-80

N.J. VIZY, JR.
1045-1296
2.17 Ac.

224-202
260-295
537-250

2.309 A

684-457
R.G. FIELD &
R.A. FIELD

213-624
805-866
L & C. KRALIK

28.24 Ac.

T.C. & B.A. KRALIK
989-198

10 Ac.

855-608
1059-1207

17.50 A

B. AT. PEROL 118-1067
J.W. & E.T. KRIZZIAN, TRUSTEES

17.33 Ac.

D.J. & L. KOBZOWICZ
1014-71

10.95 Ac.

D.A. JOSEPH
992-457

G.A. HAWK & E.A. BERTOVICH
1047-695

P. & P.S. KEPICH
1051-1105

W.D. & J.M. KEPICH
1052-685

T. KRUPANSKY
1077-429

571-481

115 A

D. & E. LAEKS
479-176

37.76 A

G. & M. MITCHELL

743-1107

J. & S. Mc Dermott
578-125

J.L. Yoder & N. BYLER
Vol. 895-1128
5.8188 Ac.

R.L. & B.W. YODER
895-1129
5.8621 Ac.

15.633 Ac.

635-549
951-360

15.456 Ac.

K.J. EDWARDS
1000-80

N.J. VIZY, JR.
1045-1296
2.17 Ac.

224-202
260-295
537-250

2.309 A

684-457
R.G. FIELD &
R.A. FIELD

213-624
805-866
L & C. KRALIK

28.24 Ac.

T.C. & B.A. KRALIK
989-198

10 Ac.

855-608
1059-1207

17.50 A

B. AT. PEROL 118-1067
J.W. & E.T. KRIZZIAN, TRUSTEES

17.33 Ac.

D.J. & L. KOBZOWICZ
1014-71

10.95 Ac.

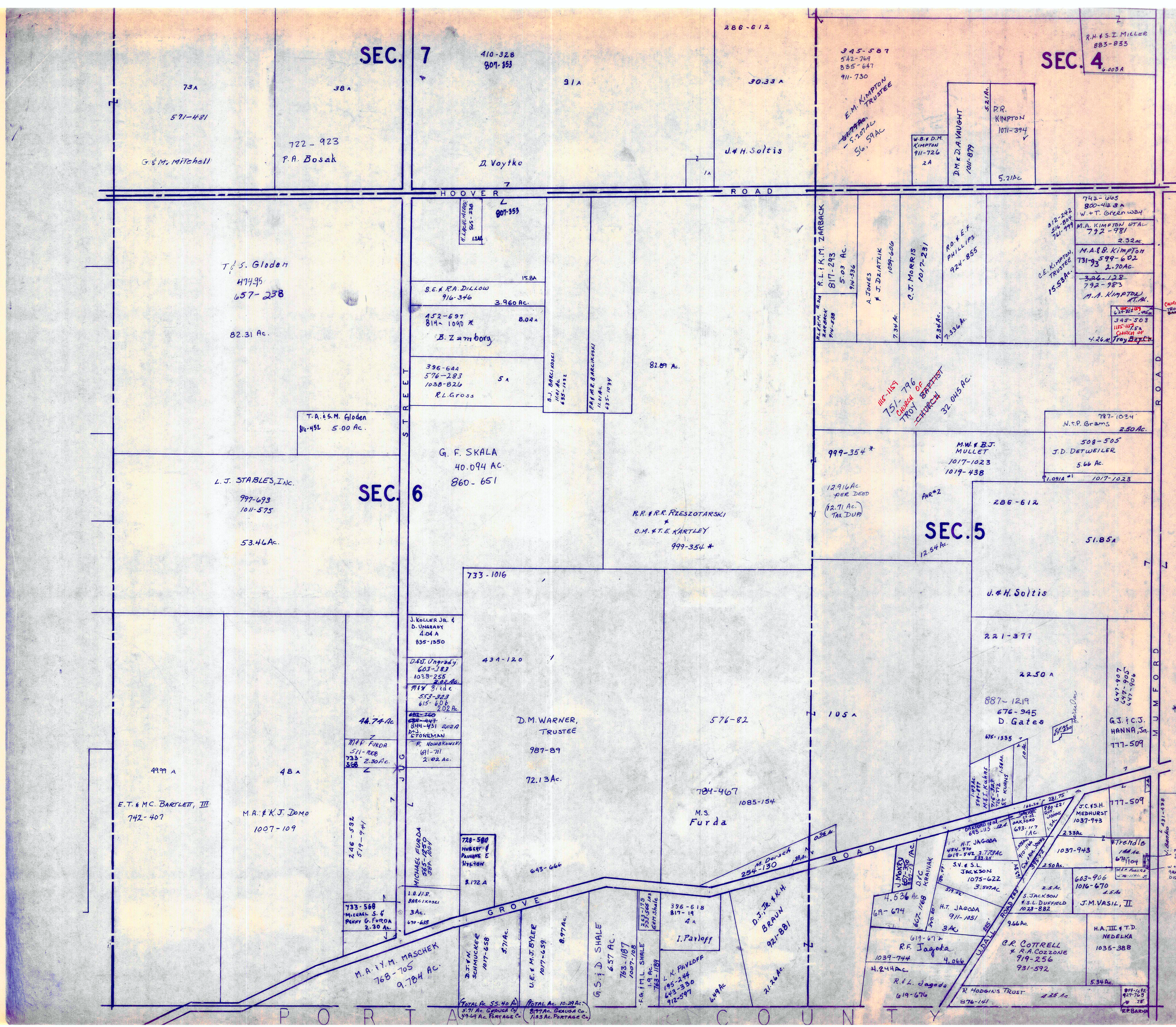
D.A. JOSEPH
992-457

G.A. HAWK & E.A. BERTOVICH
1047-695

P. & P.S. KEPICH
1051-1105

W.D. & J.M. KEPICH
1052-685

T. KRUPANSKY
1077-429



SEC. 7

SEC. 4

SEC. 6

SEC. 5

73A
571-481
G. & M. Mitchell

38A
722-923
P.A. Bosak

410-328
807-853
D. Voytko

286-612
30.33 A
J.H. Saltis

345-587
542-769
885-647
911-730
E.M. KIMPTON TRUSTEE
- 5.207 AC
56.59 AC

R.H. & S.I. MILLER
883-833
6.003A

T.S. Gloden
47495
657-238
82.31 Ac.

807-959
S.E. & R.A. DILLON
916-346
3.960 Ac.
452-697
814-1090 *
8.04A
B. Zamboni
396-644
576-283
1038-826
5 A
R.L. Gross

82.09 Ac.

T.A. & S.M. Gloden
84-452 5.00 Ac.

L.J. STABLES, INC.
997-693
1011-575
53.46A.

G. F. SKALA
40.094 AC.
860-651

R.R. & R.R. RZESZOTARSKI
*
O.M. & T.E. KARTLEY
999-354 *

999-354 *
12.916 AC.
PER DEED
(12.71 AC.)
TAX DUB

M.W. & B.J. MULLET
1017-1023
1019-438

787-1024
N.P. Grams
2.50 Ac.

508-505
J.D. DETWEILER
5.66 Ac.

1017-1023

SEC. 5

286-612

51.85A

J.H. Saltis

221-377

22.50 A

887-1219
676-945
D. Gates
475-1335

697-907
647-905
647-906
G.J. & C.J. HANNA, JR.
777-509

4999 A
E.T. & M.C. BARTLETT, III
742-407

48A
M.A. & K.J. DOMO
1007-109

733-1016
434-120
J. KOLLER JR. & D. UNGRABY
404A
835-1350
D.E. UNGRABY
603-183
1038-255
2.66 Ac.
M.W. Breda
553-223
615-608
2.02 Ac.
44.74 Ac.
M.A.P. FURDA
511-108
733-230A
568
F. Nowakowski
681-447
541-431
200A
M. STONEMAN
MICHAEL FURDA
585-1250
589
720-580
HUBERT & PAVLOFF
E. HYLTON
8.172 A
L.B. H.P.
808-1000
3A.
670-628
733-568
MICHAEL S. & PENNY G. FURDA
2.30 AC.

D.M. WARNER, TRUSTEE
987-89
72.13A.

576-82
784-467
1085-154
M.S. Furda

J.C. H. MEDHURST
1037-943

W. Trendle
679-104
1037-943

683-906
1016-670
J.M. VASIL, II

H.A. III & T.D. NEDELKA
1035-388

M.A. & Y.M. MASCHKE
768-705
9.784 AC.

U.E. & M.J. BYLER
1017-659
8.97A.

G.S. & D. SHALE
657 AC.
768-1187
1007-708
F.G. & M.L. SHALE
763-1187
1.9 AC.

396-618
817-19
4 A
I. Pavloff

L. K. PAVLOFF
195-244
643-330
912-597
4.99A.

D.J. & K.H. BRAUN
921-881
21.24A.

619-672
R.F. Jagoda
1037-744
4.066

R. & L. Jagoda
619-676
4.244A.

69-674
H.T. JAGODA
911-1051
3AC

R. HODGINS TRUST
876-141
4.25 AC.

619-672
C.R. COTTRELL
& S.L. COZZONE
919-256
931-592

899-142
927-763
78



SCALE 1" = 300'

RELATIVE REPRESENTATION
JAN. 1, 1997

A	B	C	D
E	F	G	H
I	J	K	L
M	N	O	P

TROY TWP

* Inadequate Description

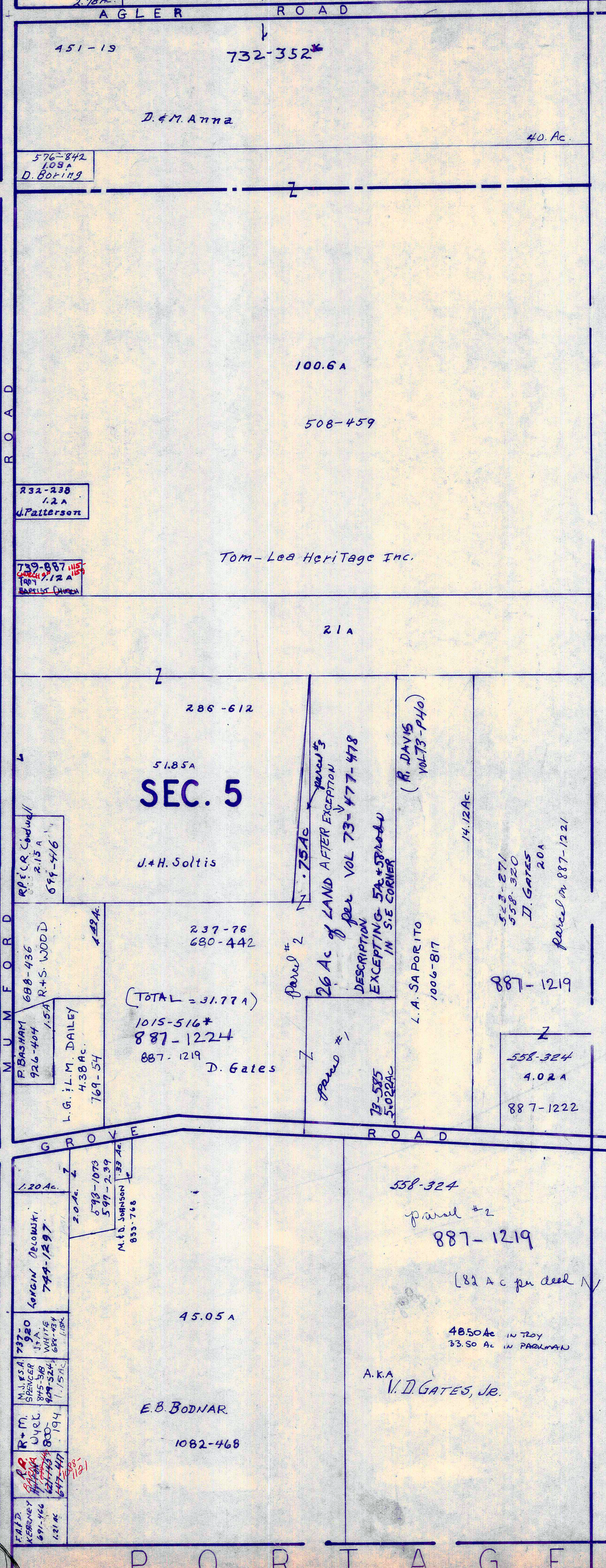
TOTAL AC. 55.40 A
577 AC. GARUDA CO.
49.44 AC. PORTAGE CO.

TOTAL AC. 10.21 AC.
877 AC. GARUDA CO.
7.53 AC. PORTAGE CO.

N.P. 667-1061 2.6
NOWAKOWSKI
350-225
798-1803 1.88 A
K.T.D. Cjeka
A.T. & M.C.
TRUAX
992-708
2.78 Ac

SEC. 4

J.E. & M.A. ANNA
32.86 Ac.



T
O
W
N
S
H
I
P

P
A
R
K
M
A
N

C
O
U
N
T
Y



SCALE: 1" = 300'

JANUARY 1, 1997
RELATIVE REPRESENTATION

A	B	C	D
E	F	G	H
I	J	K	L
M	N	O	P

TROY TWP

* Inadequate Description

